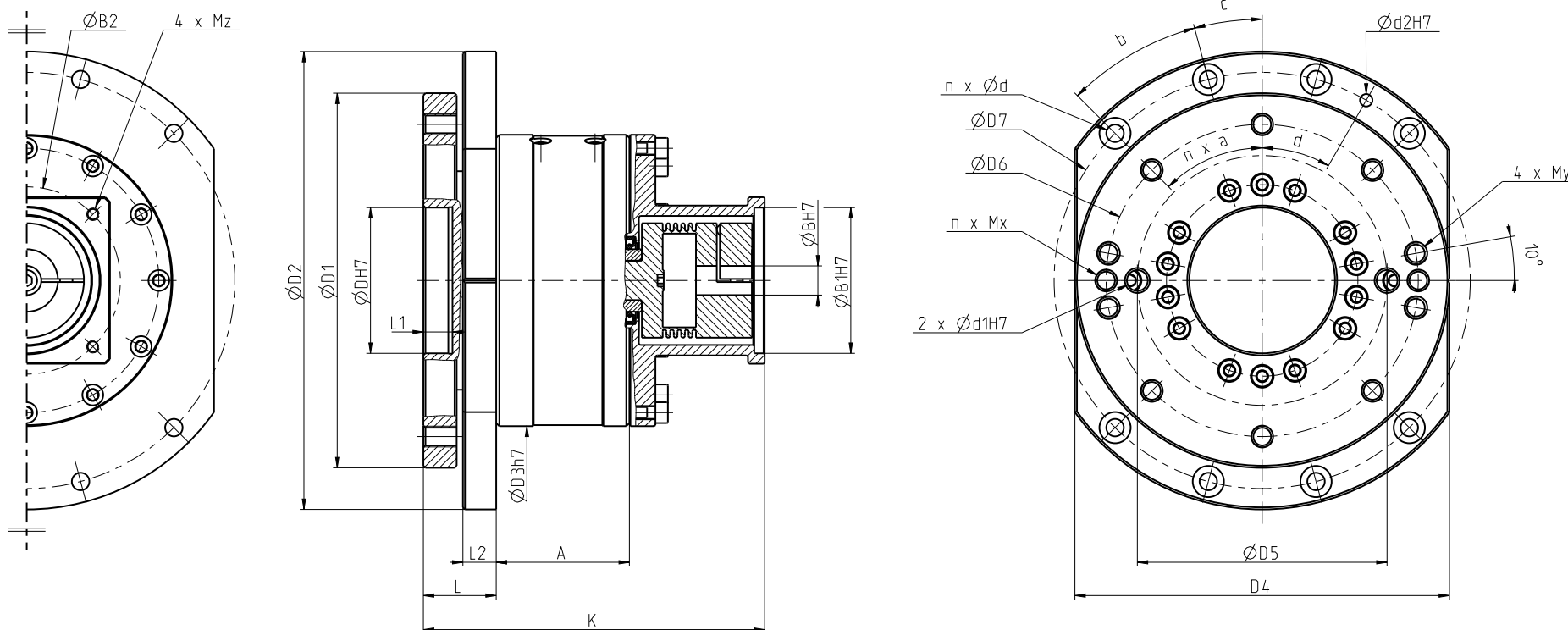




RS - A - Indirect connection / *nepriame spojenie*



Size Veľkosť	A [mm]	ØDH7 [mm]	ØD1 [mm]	ØD2 [mm]	ØD3h7 [mm]	D4 [mm]	ØD5 [mm]	ØD6 [mm]	ØD7 [mm]	n x Ød [mm]	2 x Ød1H7 [mm]	Ød2H7 [mm]	L [mm]	L1 [mm]	L2 [mm]	n x Mx [mm]	4 x My [mm]	n x a [°]	b [°]	c [°]	d [°]
60	53	30	100	132	80	132	65	85	115	8 x 6.4	5	4	20	5	10	8 x M8	-	8 x 45	45	0	30
250	64	70	180	220	140	180	120	150	200	8 x 8.4	10	6	35	14	16	8 x M10	M10	8 x 45	30	15	30
500	86	110	250	295	200	250	180	220	270	8 x 13	12	6	40	15	20	8 x M12	M12	8 x 45	30	15	30
1000	123	120	370	430	300	375	270	330	395	10 x 17	16	12	50	20	25	12 x M16	M16	12 x 30	30	0	45

1. Please use only standardized components, such as bolts, sealings, etc. / 1. *Prosím používajte len štandardizované komponenty ako napr. skrutky, tesnenia, atď.*
2. Right to change reserved. / 2. *Právo na zmenu vyhradené.*
3. The 4 x Mz thread size and the dimensions ØB1H7, ØB2 and K depend on the motor used. / 3. *Veľkosť závitov 4 x Mz a rozmery ØB1H7, ØB2 a K sú závislé od použitého motora.*